

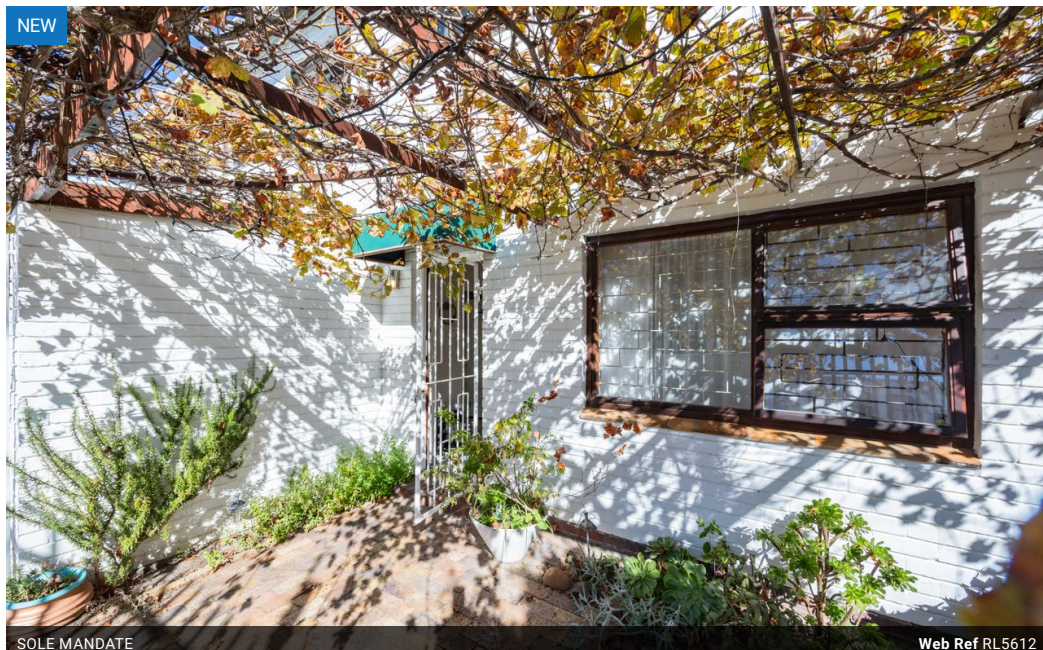


Nicola Stuart
0825841960
nicola@fmssalesandleasing.co.za

Contact Head Office

021 815 5700

5th Floor
The Terraces
25 Protea Road
Claremont
Cape Town



SOLE MANDATE

Web Ref RL5612



R1,400,000

2 1 1

Monthly Bond Repayment R14,450.64
Calculated over 20 years at 11% with no deposit.

Transfer Costs R40,617.00 **Bond Costs** R27,105.00
These calculations are only a guide. Please ask your conveyancer for exact calculations.

Monthly Levy R2,758 **Monthly Rates** R360

Pet-Friendly 2 Bedroom Townhouse in Tranquil Plumstead Cul-De-Sac

Exclusively listed with FMS Sales and Leasing

Nestled in a quiet cul-de-sac in the heart of Plumstead, this charming two-bedroom townhouse offers a serene and pet-friendly retreat. The open-plan lounge and dining area are bathed in natural light, creating a warm and inviting space for relaxing or entertaining. Large windows frame the living area, while the seamless flow to the private courtyard enhances the sense of space. Covered by a picturesque pergola adorned with grapevine, the courtyard is a peaceful escape, perfect for outdoor dining or simply unwinding in a tranquil setting.

The well-appointed kitchen features built-in cupboards and leads to a separate laundry area, already fitted with plumbing for a washing machine and offering potential for a dishwasher. The thoughtful layout ensures functionality and...

Features

Pets Allowed Yes

Interior

| | |
|--------------|---|
| Bedrooms | 2 |
| Bathrooms | 1 |
| Kitchens | 1 |
| Recep. Rooms | 2 |

Exterior

| | |
|----------|-----|
| Garages | 1 |
| Security | Yes |
| Pool | No |

Sizes

| | |
|------------|---------------------|
| Floor Size | 65m ² |
| Land Size | 1,335m ² |

Extras

Built-in Wardrobes Pets Allowed Private Garden Security Burglar Bars Electric Gate Electric Fencing Security Gate